

NEWS UPDATE

FEBRUARY 2015

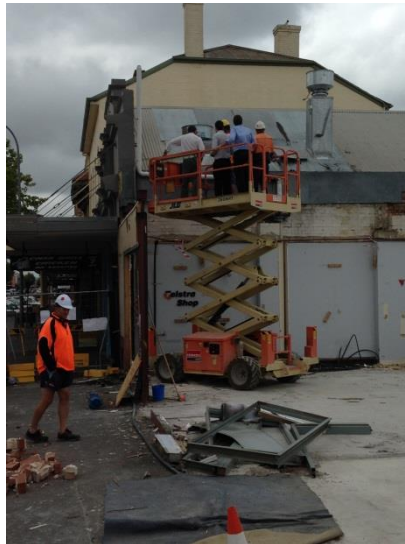
BUILDING DEMOLISHED FOR ALDI EXTENSION !

Toward the end of 2014, Divall's Earthmoving & Bulk Haulage was contacted by a number of Builders/Contractors both locally and out of town to price a project in Auburn Street, Goulburn. The scope of work included pulling down and demolishing a Government Building in order to extend the existing Aldi Supermarket and construct unit blocks above same.

In February, 2015, work began with Divall's Earthmoving working closely with ARW Multigroup to carry out the job. For a job this scale and size, it is estimated that it will take approximately 4 – 5 weeks to complete.

Some obstacles that were faced included:

- Working at heights
- Limited access at the front of site
- Limited storage areas
- Structural problems
- Re-routing of Telstra, water, optical fibres etc.



- Working in close proximity with existing businesses that remained open for the duration of the project

Divall's Earthmoving & Bulk Haulage would like to thank our Project Manager, Peter Waugh, for his dedication and hard work to ensure that this project has run smoothly. We are very eager to see the finished product !

